

# **CVRD**

## **2021 – 2025 Financial Plan**

Denman Island Water Local  
Service Area (DIWLSA)

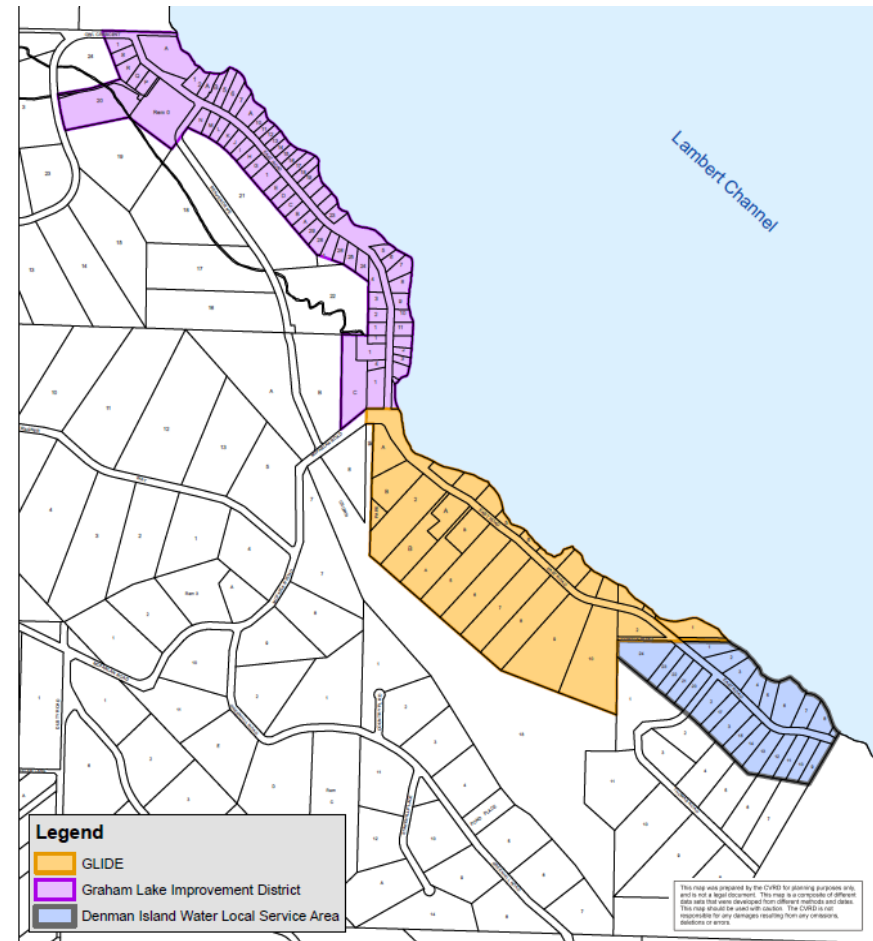
*Function 307*

# Purpose /Overview of Service

- DIWLSA was constructed in 1969 and became a regional district service in 1972 to resolve water quality concerns
- DIWLSA consists of 23 properties
- Day to day operations of DIWLSA are managed by the Graham Lake Improvement District (GLID)
- Revenue for the service is collected through a flat rate matched to GLID's

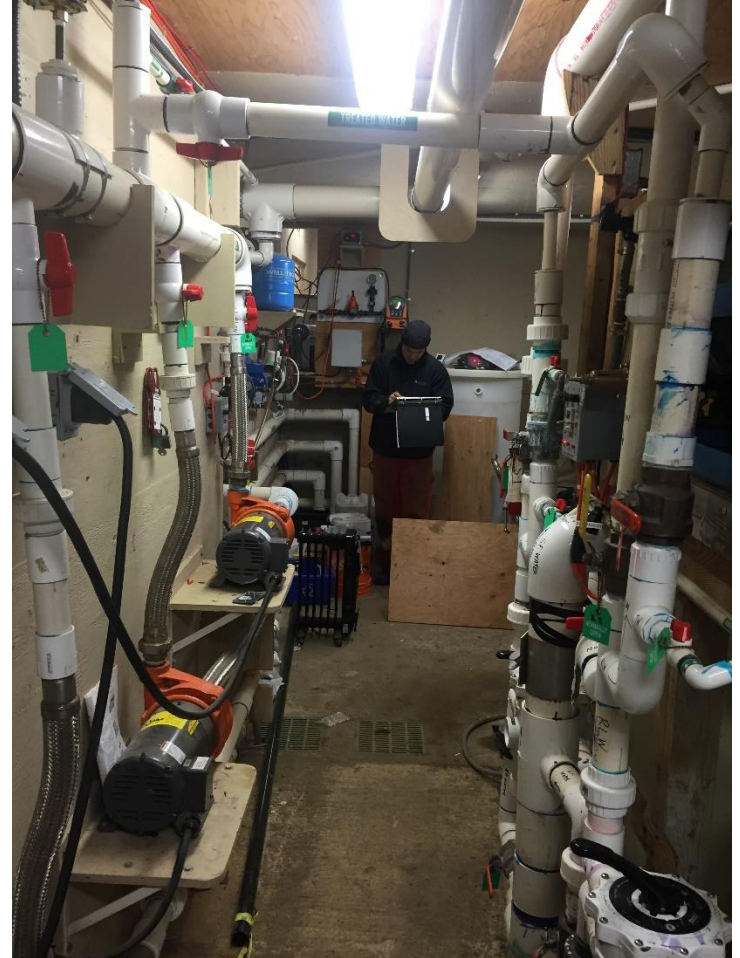
# 2020 Work Plan Accomplishments

- Progressed conversion study should GLID opt to become a CVRD service
- STWO compliance options analysis completed
- ICIP grant application for SWTO compliance



# 2021 Work Plan Priorities

- Continue discussions with GLID on amalgamation of the two services
- If ICIP grant funding:
  - Work towards conversion for Jan 1, '21
- If no ICIP grant funding:
  - Consult with GLID and DIWLSA users
  - Work towards possible conversion for Jan 1, '21
  - Reassess SWTO options analysis and seek optimal solution w/o grant



# 2019 to 2020 Comparative Budget Summary



**2021  
Proposed  
Budget**

**#307 Denman Island Water**

<b>Operating</b>	<b>2020 Budget</b>	<b>2021 Proposed Budget</b>	<b>Increase (Decrease)</b>
<b>Revenue</b>			
Senior Government Grants	7,422	7,422	-
Sale Services User Fees	30,900	30,900	-
Other Revenue/Recoveries	1,000	1,000	-
Prior Year's Surplus	2,155	411	(1,744)
	<b>\$ 41,477</b>	<b>\$ 39,733</b>	<b>\$ (1,744)</b>
<b>Expenditures</b>			
Operating	39,799	39,651	(148)
Contribution to Reserve	1,678	82	(1,596)
	<b>\$ 41,477</b>	<b>\$ 39,733</b>	<b>\$ (1,744)</b>

# In Summary...

<b>Fiscal Responsibility</b>	<b>Climate Crisis and Environmental Stewardship and Protection</b>
<ul style="list-style-type: none"><li>• GLID will continue to operate DIWLSA to minimize costs to users</li><li>• Conversion study focused on ensuring long term fiscal sustainability</li></ul>	<ul style="list-style-type: none"><li>• New treatment system being selected to ensure resilience to climate change</li></ul>
<b>Community Partnerships</b>	<b>Indigenous Relations</b>
<ul style="list-style-type: none"><li>• DIWLSA and GLID will continue to work together to develop a sustainable path forward for both services.</li></ul>	<ul style="list-style-type: none"><li>• The K'ómoks First Nation will be consulted should the CVRD opt to further investigate bulk water supply on Denman Island.</li></ul>